

EASTERN NEBRASKA SECTION

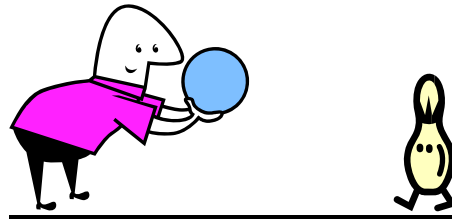


Society of Women Engineers

ASPIRE • ADVANCE • ACHIEVE

August 2007 Newsletter

Crazy Bowling was a Success!!



Thursday, July 19, 2007 at Maplewood Lanes

The Eastern Nebraska Section of SWE had a joint social with NAWIC (Nebraska Association of Women in Construction). It was a great time! Pizza and dessert were provided and everyone enjoyed meeting new people. It seems most people were also experiencing crazy bowling for the first time. The first roll for each bowler had a theme ranging from walking backwards to acting like your favorite cartoon character. Prizes were given for form as a crazy bowler and for high score (the lane you started on wasn't the lane you ended on). Stay tuned for more fun social events!!!

One More Chair Position Open

We still have one position open, the Career Guidance Chair. The Career Guidance Chair is responsible for educating children about engineering and science and working with local Girl Scout Troops, area schools, and other groups to organize educational engineering and science related activities. The Career Guidance Chair's duties include:

- Setting up and promoting career guidance activities for students of all ages
- Acting as the "go to" person for special events where SWE has been asked to help out
- Organizing other community service events as necessary

If you are interesting in becoming the Career Guidance Chair, contact Lara Syrocki at president@swe-nebraska.org.

Section Officers:

President

Lara Syrocki, P.E.
president@swe-nebraska.org

Vice President

Angel McMullen-Gunn
vice_president@swe-nebraska.org

Council of Sections Representative

Amanda Stahlnecker
COR-rep@swe-nebraska.org

Treasurer

Janet Doan, P.E.
treasurer@swe-nebraska.org

Secretary

Jo Whitaker
secretary@swe-nebraska.org

Newsletter Editor/Webmanager

Amanda Stahlnecker
newsletter@swe-nebraska.org
webmanager@swe-nebraska.org

Membership Chair

Janis Pflingsten
membership@swe-nebraska.org

WOW! Event Chair

Elizabeth Hunter, P.E.
wow_event@swe-nebraska.org

Career Guidance Chair

OPEN

UNO Student Section Counselor

Lara Syrocki, P.E.
UNO_Counselor@swe-nebraska.org

UNL Student Section Counselor

Angel McMullen-Gunn
UNL_Counselor@swe-nebraska.org

Engineering Roundtable

Elizabeth Hunter
EAHunter@leodaly.com

Message from the President

Who inspired you?



As we prepare for the upcoming Wow! That's Engineering! event, we ask ourselves, how can we inspire young women to consider engineering as a career? How can we show them that Engineering is fun, exciting, and rewarding? Then I stopped to think, why did I become an engineer? Who inspired me?

To be honest, I didn't know that I wanted to be an engineer. I loved math and physics, but didn't cross my mind that engineering would be for me. My parents were very involved in my education and everything revolved around school. I went to school overseas, so after high school, you would send your applications to multiple universities and based on your grades, they would match you with the appropriate college.

I was accepted in Civil Engineering. I can't say I was excited, my mom however; was very excited and couldn't wait to see her daughter as an engineer. I was very surprised at my mother's reaction. She was 60 years old, and I thought naturally she would think it is not a career for women. My mother was never encouraged in her education by her parents; although they had encouraged her brothers. Because of this, my mother decided that she would raise her daughters to feel that we had the ability to do anything that we wanted to do. She was very instrumental in encouraging and supporting of me throughout my life. More importantly, however, I think she instilled in me a sense of self-confidence and challenge. I decided to give engineering a chance.

It was summer of 1990 and I was just finishing my freshman year in college when my parents passed away. My father died of cancer and my mother died of a heart attack 6 days after my father. At 19, my whole world came to an end. I didn't have the strength or the motivation to leave the house. College was starting in three weeks and I was not ready for it at all. The support of my brothers and sisters was tremendous; they reminded me that my parents would want me to go back to college and they would want me to be an engineer. I went back to college and decided that I wanted to do it for my parents and especially for my mom. Not until I started taking engineering classes did I realize that I really liked engineering and that it was for me.

I know that math and science gave me the tools to solve engineering problems, but I know that my mother gave me the tools to solve life problems. My mother was and still is my inspiration, at times when engineering was not a career for women, she believed it was. That was my inspiration!

Who inspired you? What role did your family play in shaping your future? How did your family influence your decision to pursue a career in engineering? I would love to hear your stories and share them with the section in the next newsletter. Email your stories to newsletter@swe-nebraska.org. A flyer will also be created that contains some of your stories to be shared with the young ladies and their parents/counselors that added the WOW! That's Engineering event in September.

Thank you for being part of SWE and hope to see you in our upcoming events.
Respectfully,

Lara Syrocki, P.E.
President – SWE Eastern Nebraska Section



Check out the new face to our section website at www.swe-nebraska.org

It is still being updated and improved. Be patient with us as we grow. If you have any questions or suggestions, contact Amanda Stahlnecker at webmanager@swe-nebraska.org.

CALENDAR OF EVENTS

Next Meeting

Food, Fun and Photos

Art Chicks

127 Main Street, Louisville, NE 68037

Saturday, August 25th at 12:45 p.m.

Join us for a Social Luncheon to Celebrate our new SWE-Year. You will meet the new officers and mingle with the UNO and UNL Student Sections.

To accommodate both Omaha and Lincoln members, we have chosen this fun and exciting place. Art Chicks is located in Louisville, NE, just 40 minutes from Omaha and Lincoln. Come early and visit Louisville Antiques, Louisville Art Gallery, Old Fashioned Soda Fountain, and Coop-de-Ville and Feathers!!

The price is \$16.00, which includes sandwich, salad, dessert, and a beverage (Tax and 15% gratuity are included).

If you haven't already responded to the evite and will attending or have any questions, email the section president, Lara Syrocki, at president@swe-nebraska.org.

Upcoming Meetings

October – Professional Development Topic in Lincoln

November/December – Holiday Party

January – Work-Life Balance Topic

If you have any ideas for topics of meetings or other suggestions or know of another organization's meeting that would be of interest to the section, please email SWE_Planning@swe-nebraska.org.

**Do you like to READ and
want to grow professionally?**

If you are interested in joining a professional development book club through the section, contact Lara at president@swe-nebraska.org



**"Girl Scouts - Engineering the Future"
Saturday, October 20, 2007, York, NE**

This summer, I was approached by the local Girl Scout Leader, Pam Hakl, of York, to see if I would be willing to help with a Girls Scout event that would encourage young women to consider the potential of a career in engineering and technology. I instantly thought of SWE's partnership with the Girls Scouts! Using the SWE website as a resource, together we planned "Girl Scouts - Engineering the Future."

"Girl Scouts - Engineering the Future" Day is scheduled for Saturday, October 20th, 2007 in York and is very similar to our planned SWE WOW! Event. The day is targeted for girls ages 10 and up, from the Homestead Girls Scout Council, including Cass, Fillmore, Gage, Jefferson, Johnson, Lancaster, Nemaha, Otoe, Pawnee, Richardson, Saline, Seward, and York Counties plus the communities of Valparaiso, Ceresco, Ashland in Saunders County and Alexandria in Thayer County. The morning sessions currently planned will be comprised of different women discussing their jobs (approximately 4-6 speaker sessions for 30-45 minutes), and/or having a small hands-on activity to show the girls a bit more about the different engineering disciplines. The afternoon will be an "Invention Session" where the girls will be put into groups to actively invent and even create their designs.

I am actively recruiting any SWE member that would be interested in helping with "Girl Scouts - Engineering the Future" Day. If you would like to help, or have any questions, please contact me, Angel McMullen-Gunn, at vice_president@swe-nebraska.org

evite MEETING INVITES

If you wish to receive invitations to our meetings and social events via evite, please add info@evite.com to your Safe List in your email options. This will ensure that you receive the section's meeting announcements.

SWE NATIONAL CONFERENCE

October 25-27, 2007
Women In Tune With Technology
Nashville Convention Center
Nashville, Tennessee

For more information go to <http://www.swe07.org/>

PE Exam – October 26, 2007
Are you Ready?!?!



THAT'S ENGINEERING EVENT


Saturday September 22, 2007
8am to 1pm

The Peter Kiewit Institute
1110 S. 67th Street
Omaha, Nebraska 68182

Planning is underway and we are quickly approaching the event. Planning meetings will be held between now and the event to finalize all the details. Stay tuned for those dates.

As the event approaches, we will be looking for volunteers, so save the date and check out the section website for more information. If you have any questions, contact Elizabeth Hunter at www_event@swe-nebraska.org.

◆ ● ● ● ● ● ● ● ● ● ● ● ● ● ● ● ● ● ● ● ◆



For more information about the section's activities, please visit our website at www.swe-nebraska.org

LADY IN THE SPOTLIGHT

Greetings, I am Angel McMullen-Gunn and I am currently serving as your Vice President and UNL Student Section Counselor. I earned my BS in Mechanical Engineering in May, 2003, and just completed my Masters of Engineering this summer from the University of Nebraska – Lincoln, as well. I currently live in Seward, and work at Hamilton Sundstrand, and aerospace manufacturer in York. I am the Engineer for the Precision Machining Facility within HS that fabricates valves and support components for aerospace fuel and governor systems. Responsibilities I have include supporting the manufacture, test, and quality of the PMF's products, as well as serving as Co-op Coordinator for our plant site. Within my department, we take raw material and machine it into the jet fuel mechanisms. We then flow test these components under various fluid-flow and pressure conditions, testing to ensure the valve can supply the proper flow and/or pressure in conjunction with response time, similar to if it were in an aircraft. Measurement accuracy is very high for these parts; tolerances are commonly +/- .00001. These sets then go into jet fuel controls and propeller control units. My customers include



General Electric, Rolls Royce and Pratt Whitney.

Outside of work, I enjoy reading, knitting, photography and trying new recipes. I am active in the community as a Founding Member and Events Coordinator of the Seward County Young Professionals, as well as serving as Secretary of my Home Owner's Association. I am also active in the American Legion Auxiliary. I have been married for over six years to my husband, Darrin. We have two dogs, Buddy (a corgi/ rottweiler mix) and Roscoe (a basset hound). I look forward to working with you all to make this a successful SWE year!

**SCHOOL STARTS BACK UP FOR
UNL AND UNO ON
AUGUST 27TH**

UNL UPDATE

Here is a little update on what the student section on UNL is up to the first part of the school year.

August 26th – Big Red Welcome
August 29th – Rock the Dock
September 5th – First Meeting
October 6th – WIIE Day

UNO UPDATE

<http://www.unomaha.edu/swe>

The UNO section will be hosting their **Annual Ice Cream Social on Thursday September 6th at 7pm**. They are asking for our helping providing a couple professionals to speak about their experiences as a woman in the industry including challenges they face and triumphs they have had. The women will also be asked to discuss their membership in SWE and what it has done for them such as networking, friendships, job placement, etc. Each professional would be speaking for only 5 – 10 minutes. If you are interested, email Amanda at newsletter@swe-nebraska.org

This year the UNO section is looking for a big push in membership to grow the section as they prepare a bid for Regionals in March 2009. Another event they have coming up is a **BBQ on September 19th with IEEE and ASCE**.

NOTEWORTHY NEWS



Our vice president, Angel McMullen-Gunn is pregnant with her first child. The baby will be due in late February.

Please extend your **CONGRATULATIONS** to her the next time you see her.

INFORMATION TO SHARE

We always welcome articles of interest or tidbits of news from our newsletter recipients. If you have something you would like to see in the next newsletter, contact Amanda Stahlnecker at newsletter@swe-nebraska.org.

LOCAL JOB POSTINGS



SUMMARY: This senior position is responsible for managing Environmental Programs at multiple facility(s)

to ensure compliance with all Federal, State, and local environmental laws and regulations. Additionally, this position could be filled by an individual who is responsible for all environmental functions at a facility. Environmental duties include dealing with Clean Air and Water Act issues, including NPDES permitted discharges of wastewater and storm water. Other duties include Management of air permits, management of spills, non-hazardous and hazardous wastes, implementation of pollution prevention activities, management of all community right-to-know programs including Form R, Tier II, and Risk Management Plans, Clean Air Act issues, and performing other duties as the need arises. A high level of initiative is expected, along with the ability to effectively interact and communicate with persons at both the facility and corporate level, and the general public.

Location: This position will be regional, covering facilities at Omaha, NE., Council Bluff, IA. and Cherokee, IA. The person can be located at any of these three locations.

Education: Bachelors degree in environmental engineering or sciences preferred.

Experience: 1-3 to years including internships.

Computer Skills: Basic computer skills.

Travel: 12 or more domestic trips per year.

POSITION REPORTS TO: Mgr Complex or equivalent

To apply please email your resume to Jimmy Mardis, Group Director Environmental Health & Safety, Tyson Foods, Inc. at jimmy.mardis@tyson.com or call (479) 290-7367.

To post local engineering or engineering related jobs please contact our SWE section at president@swe-nebraska.org.

Velvet-Covered Bricks

By Dr. John C. Maxwell

As a child, when I misbehaved, I was sure to receive “The Look” from my father. I have vivid memories of the furrowed eyebrows and pursed lips of The Look. It makes me shudder just to remember it. The Look could cut right through my body and penetrate into my soul. There was nothing comforting about The Look, and, invariably, it signaled impending disciplinary measures. The Look was to be respected, The Look was to be feared, and, above all, The Look was to be avoided.

However, just as I can recall The Look, I also remember the tenderness of my father’s care after he disciplined me. I remember the whispered assurances of his love for me. I remember the warmth of his embrace as he held me in his arms. I remember his tenderness as he gently explained why I had been disciplined and how I could learn from the experience. His was not mean-spirited or severe in his discipline; rather, his loving correction was intended to develop me into a man of character.

Leaders, like my father, must balance toughness and tenderness. My friend, Tim Elmore, describes these leaders as Velvet-Covered Bricks. They are firm and strong on the inside, but soft and pleasant on the outside. In this edition of Leadership Wired, I would like to discuss the qualities of that make a leader into a Velvet-Covered Brick. I am indebted to Tim Elmore for many of the thoughts in this lesson.

TOUGH BUT TENDER

Some leaders are so tough they could chew nails, but their insensitivity prevents them from connecting with their employees. Ignorant of the emotions around them, they rely on authority and scare tactics to earn the allegiance of their team.

Other leaders go the extra mile to earn the admiration of those they lead. They love to be seen as the “good guy,” and they go soft on their team. To protect their popularity, they sacrifice healthy confrontation or neglect holding employees accountable.

A Velvet-Covered Brick leader makes difficult decisions, but at the same time, they act as emotional caretakers to the people their choices affect. They instill discipline, but they also provide encouragement and inspiration.

CONFRONT PROBLEMS BUT CONSIDER PERSPECTIVES

Velvet-Covered Brick leaders are not afraid to deal with conflict in order to iron out an unhealthy situation. By actively addressing problems, they are peacemakers as opposed to peacekeepers. At the same time, such a leader remains open to the perspective of others. Although supremely confident, a wise leader knows the fallibility of his or her judgment, and they turn an attentive ear to those who share differing opinions.

COMMITTED TO RESULTS AND COMMITTED TO RELATIONSHIPS

Leaders with a Velvet-Covered Brick mentality refuse to compromise goals or take the easy road out of tough spots. They relentlessly set the bar high so that the team achieves its potential. Yet, all the while, leaders value people just as much as productivity. They never sacrifice relationships simply to get results

PROFESSIONAL AND PERSONAL

The Velvet-Covered Brick type of leader maintains an aura of professionalism in the workplace at all times. Such a leader stays poised in the most heated moments and keeps control of his or her emotions. While approachable, they reserve part of themselves (their fears, knowledge, insights) so that they can effectively motivate the team from a place of authority.

At the same time, leaders don't want to come across as aloof, distant, or plastic. The best leaders are warm, genuinely interested in their teammates, and intentional in understanding what makes each person unique. Additionally, to connect with the team, they may show selectively disclose information about themselves or even let down their emotional guard during a meeting.

TAKE CRITICISM AND SERVE THE CRITIC

Leaders who aspire to be Velvet-Covered Bricks develop thick skin and bypass the desire to retaliate against critics. Instead, they graciously accept criticism and welcome confrontation. Then, they take pains to win over their critics by reaching out to them. They go the extra mile to wade through conflict until resolution can be reached.

RESPECTED AND APPROACHABLE

A leader earns respect on the basis of what he or she has done. More often than not, respect is gained on difficult ground. Adverse circumstances test the mettle of a leader and show a leader's true merit.

For a Velvet-Covered Brick leader, respect is balanced by approachability. An approachable leader has a consistent mood, is quick to forgive, willing to apologize, and shows authenticity. A leader at ease with himself puts others at ease. Secure leaders aren't constantly seeking validation from others, and, as such they are free to add value to those they lead rather than deriving value from the approval of those around them.

People are drawn to leaders who value them. They will approach a leader who makes them feel encouraged, helps them grow, and treats them honestly.

REVIEWING THE VELVET-COVERED LEADER

The Brick	The Velvet
Toughness	Tenderness
Confronts Problems	Considers Differences
Results-driven	Relational
Professional	Personal
Endures Criticism	Serves the Critic
Respectable	Approachable